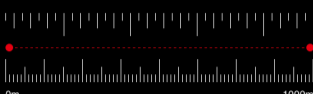


Thermal Monocular Mile Series

Let's Go Out and Explore

Fire Detection

As a thermal imaging camera, M Series also offers automatic fire detection. Forest management personnel can use it to conduct inspection, so as to quickly find fires and arrange personnel to deal with the fire in time. Supports fire detection up to 1 km. (Fire size: 2m*2m).



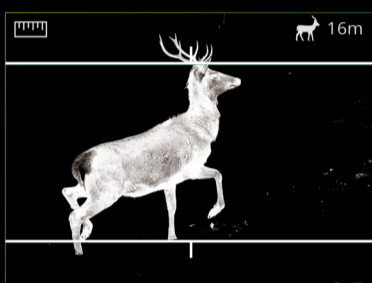
1000m
Fire Detection

2m*2m
Fire Size



Distance Measurement

It supports distance measurement function. By selecting the measurement target type and placing the measurement line on the top and bottom of the target, the approximate distance of the target can be obtained.



Long Battery Life

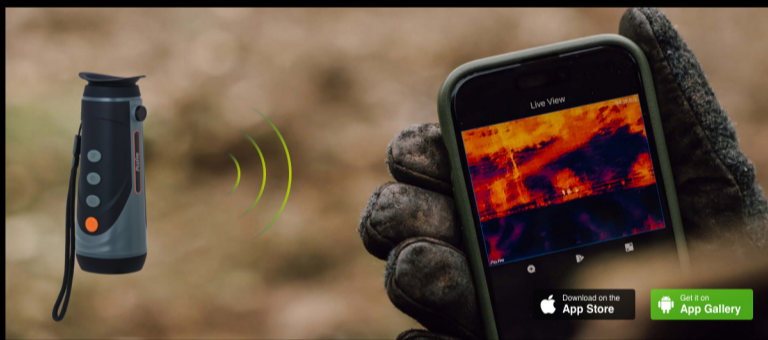
Mile series supports up to 9 hours of battery life, and support USB cable power supply, to ensure that you are in the field, it can always be available.



*M20 series supports 9h battery life and the test environment is 25°C.

WiFi Hotspot & APP

Mile series monoculars are equipped with a Built-in WiFi hotspot module. By connecting your monocular to your smartphone via WiFi hotspot, you can get real-time images on the APP.



Smart Standby Mode

The device has a built-in distance sensor, and if it detects that no one is using it for a set period of time, the device will turn off the display for longer battery life, while other functions remain online. You can start quickly by pressing the button.



Compact Structure Design

Mile series monocular adopts ergonomic structure design, with appropriate hand feel. It meets the IP67 protection rating, passes the 2-meter drop test, and can follow you to any environment.

IP67
Protection Class

2m
Drop Test



Main parameter

Model	Sensor	NETD	Lens	Display	Battery	Detection
MP20-B7			7mm F1.0			345m
MP20-B10	256 × 192 12μm	≤40 mK@/1.0	10mm F1.0	720 × 540 Display 0.2"	>9h	460m
MP20-B15			15mm F1.0			710m
MP40-B13			13mm F1.0			508m
MP40-B19	400 × 300 17μm	≤35 mK@/1.0	19mm F1.0	1280 × 960 Display 0.4"	>5h	650m
MP40-B25			25mm F1.0			900m
MP60-B18	640 × 512 12μm	≤35 mK@/1.0	18mm F1.0	1280 × 960 Display 0.4"	>5h	900m
MP60-B25			25mm F1.0			1240m