

Thermal Monocular Ranger Series

Master Distance and Details

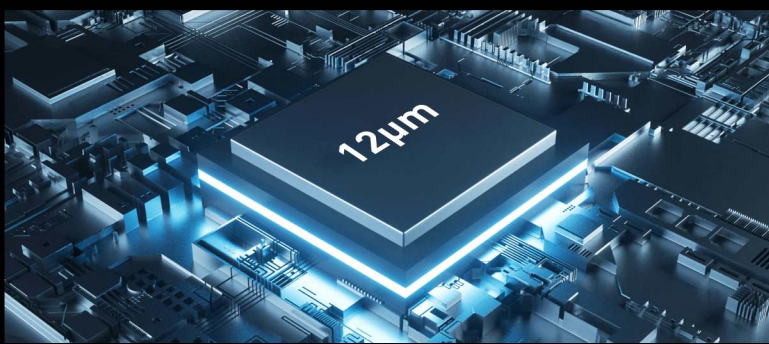
Pro-grade Image Sensor

All models adopt 12μm detector, up to 640×512 resolution, detector sensitivity < 30mk, even in heavy rain, fog or cold harsh environment, can perfectly present details, clearly observe the target feature details.

12μm
Detector

640×512
Resolution

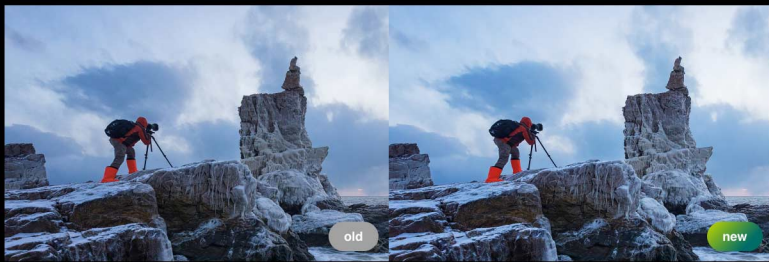
< 30mk
Detector Sensitivity



Vivid Scene is in the Screen

The Ranger series monocular is equipped with high-resolution OLED, which brings the picture quality experience such as contrast and color to a new level. Compared with 1024×768 resolution, the 1440×1080 resolution has doubled the number of pixels, making it clearer and more detailed.

1440×1080
Resolution



Extend Your Sight Edge

Ranger has a maximum 50mm lens, which can realize the detection distance of 2600m, helping you break through the visual boundary of human eyes at night.



50mm
Maximum Lens

2600m
Detection Distance



Six Color Palettes

Support white hot, black hot, alarm, iron red, jade, amber color mode, to meet your observation needs in different scenarios.



Long Battery Life

Support more than 7.5 hours of battery life, also support manual and automatic standby mode, to meet your outdoor observation needs all day.



Strong Protection Ability

Ranger supports IP67 protection and can be used after soaking in water for half an hour. The minimum operating temperature is -30°C, which can follow you to harsh environments.

IP67
Protection Class

-30°C
Minimum Operating Temperature



Main parameter

Model	Sensor	NETD	Lens	Display	Battery	Storage	Detection
MP-R425	384 × 288	12μm	25mm F1.0	1440 × 1080 Display 0.4"	>7.5h	32GB	1300m
MP-R435	12μm		35mm F1.0				1800m
MP-R625	640 × 512	≤30 mK@1/1.0	25mm F1.0	>6.5h	32GB	1300m	
MP-R635			35mm F1.0			1800m	
MP-R650			50mm F1.0			2600m	