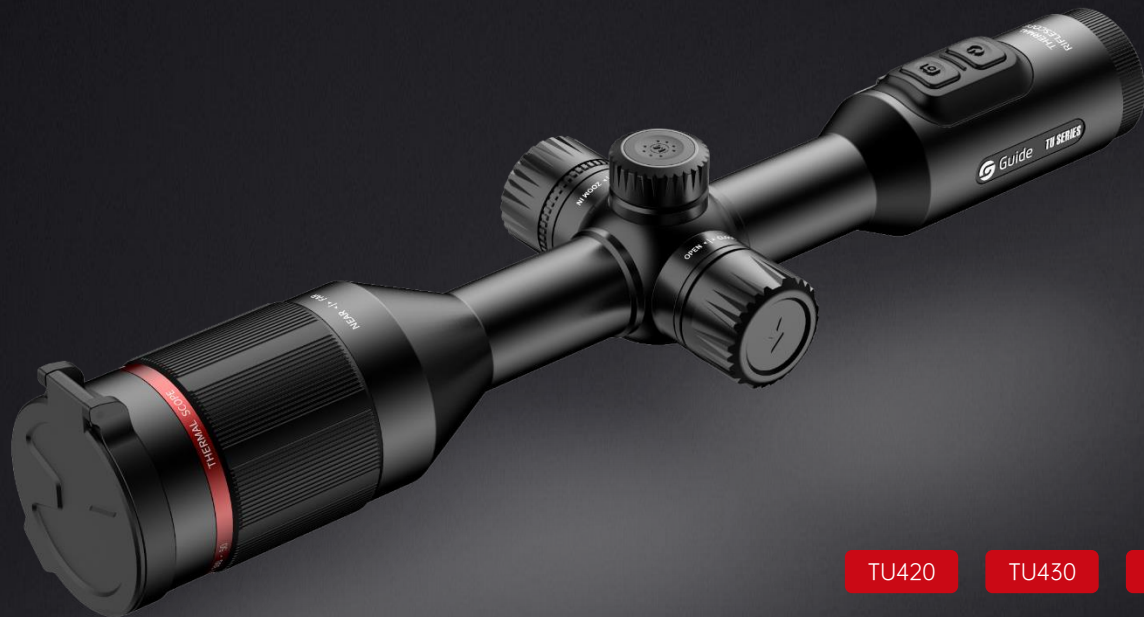


TU Series

Thermal Imaging Riflescope



TU420

TU430

TU450

Introduce

Guide TU thermal imaging riflescope retains the appearance of a traditional daylight scope and perfectly integrates latest premium thermal imaging technology. The design of this scope accommodates long-term operating habits of hunters. TU series adopts 400x300 high-sensitivity thermal detector with three different lens options of 25mm,35mm,50mm, and its 10 sets of zero calibration configuration make it convenient to switch between different instruments.



Features and Benefits

- HD OLED display, with 1x~4x smooth zoom, provides a comfortable visual experience
- 10 sets of zero calibration configurations can be saved, no need to recalibrate for different instruments
- The reticle density can be zoomed in synchronously with the image to ensure the aiming accuracy
- 10 kinds of reticles, 6 kinds of reticle colors, 10 grades of reticle brightness, for your selection
- Support photo and video, record wonderful moments at any time, easy to share
- Remote control by WIFI or Bluetooth, for diversified usage
- Rugged and durable, IP67 rating, working temperature -30°C~50°C, no fear of severe weather
- 10hrs super long duration time, changing battery without turn off, ensuring full day operations

Application

- Outdoor Observing
- Law Enforcement

NEW

Specifications

Model	TU420	TU430	TU450
Detector			
Detector Type	400×300@17μm, VOx		
Spectral	8μm ~ 14μm		
NETD	≤50mk		
Lens			
Focal Length	25mm	35mm	50mm
Focusing	Manual		
FOV	15.49°×11.65°	11.1°×8.33°	7.78°×5.84°
Display			
Display Screen	Full-color 0.39"OLED screen, 1024×768		
Eyepiece	Pupil distance of eyepiece 48mm, Eyepiece magnification 14×		
Magnification	1.6×~6.4×	2.3×~9.2×	3.2×~12.8×
Imaging			
Frame Rate	50Hz		
Digital Zoom	1×~4× smooth zoom		
Scene Modes	Enhance, highlight, natural		
Color Palettes	White hot, black hot, customized red hot, green hot, iron red, blue heat		
Picture-in-picture	on/off, the position is adjustable		
Functions			
Wi-Fi/APP	Support Wi-Fi to share pictures and videos, connect to APP (IOS & Android) to control the device remotely		
Compensation Modes	Scene compensation, shutter compensation, automatic compensation		
Zero Calibration	50m/100m/200m/300m/500m		
Gun Type Selection	10 sets of zero calibration configurations can be saved, no need to recalibrate for different instruments		
Reticle	10 reticle styles, 6 colors, 10 levels of brightness		
Others	Photo taking, video recording, hotspot tracking, Stadiametric rangefinder		
Power Supply			
Battery Type	1× internal Battery + 1× external battery, rechargeable, change external battery without power cut off		
Battery Operating Time	Battery continuous working time ≥ 10hrs		
Interface			
USB	Type-C, It can supply external power and charge, and can read the data of memory card		
Video Interface	Micro HDMI		
Environmental Characteristics			
Operating Temperature	-30 °C ~ 50 °C (External power supply is required below -20°C)		
Storage Temperature	-45°C~70°C		
Humidity	Working and storage 10% ~ 95%, non condensing		
Shock	500G/1ms		
Vibration	10Hz ~ 150Hz ~ 10Hz 0.15mm IEC60068-2-6		
IP level	IP67		
Certificate	RoHS, CE, FCC, EAC, UN38.3 (Battery certificate)		
Physical Characteristics			
Internal Storage	16G		
Weight (excl battery)	930g	940g	950g
Dimensions (excl eye mask)	367×107×69mm	367×107×69mm	377×107×69mm
Package Contents			
Standard	Thermal Imaging Riflescope, TYPE-C Data Cable, Lens Cover, Adapter, Battery, Charger, Micro HDMI Video Cable, Eye Mask, Picatinny Tube Clip×2, Quick Start Guide		
Optional	Battery, Remote Control		

