



MONOCULAR

LYNX Pro

LX19 / LH25



12 μ m

35 mk

NETD

8x

DIGITAL ZOOM

Handheld Thermal Monocular Camera

**Compact Size,
Easy to Carry!**

Light Weight Design of 310 g/0.68 lb only



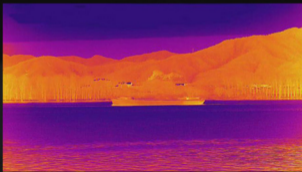
310g Only

Thermal Monocular Camera

CAN YOU IMAGINE?

In the darkness night

It can help you insight into the heat details hidden in the depths





This is the DISCOVERER



— You can observe the thief at a glance in the night



— Outdoor Camping , Can observe wild life animal at your side



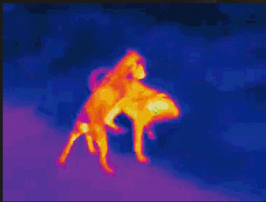
— Observe the road conditions around home at night

Prevent emergencies invisible at night



— Pet is gone

Can be search in first time



— Observe bird behind of the branches leaves on the tree

And observe animals



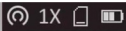
Avoid hidden surroundings and quickly highlight the target

It is a good partner for mountaineering expeditions, outdoor hunting, administrative law enforcement, and maritime search and rescue



Thermal Imaging Mode Select

00:05:35

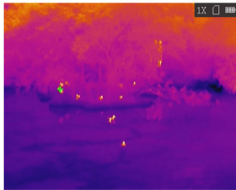


Distance : 75m

Black Hot



Effect Show



LARGE OLDE field of view

LARGE OLED FOV



Feel the Differeny "World(Vision)" anywhere

FEEL THE DIFFERENT "WORLD" ANYWHERE



Long Battery life



USB Recharge



8G Onboard Storage

Long Detection Range

With the advanced imaging sensor and lens, detection range of a 1.7m target can reach up to 1181m



Target Ranging Available / Доступен целевой диапазон



STEP 1 Highest point



Screen choose the target highest point



STEP 2

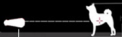


Lowest point

Screen choose the target lowest point



STEP 3



Ranging

Advanced VOx 12 μm

Imaging Sensor

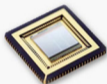
LYNX PRO series carries the new VOx 384x288 12 μm sensor (less than 35 mk), and large aperture lens, which gives a clear picture of the target even in complete darkness.



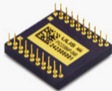
12 μ m 17 μ m

Imaging Detection Sensor

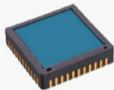
Imported from France, the imaging quality is more clear and smooth



VS



VS



12 μ m VOx Sensor

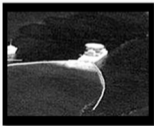
17 μ m VOx Sensor

25 μ m Imaging Sensor



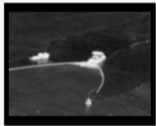
12 μ m Imaging Effect

Imaging is more clear & stable



17 μ m Imaging Effect

Imaging is clear & stable



25 μ m Imaging Effect

Imaging is blurry

WI-FI Hotspot for Mobile APP

Share Different Visual In the world



take photo



take video



WIFI

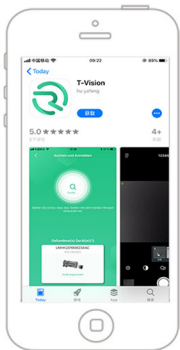


Hotspot



WIFI-Connect

YOUR PHONE IS THE SCREEN



Your Phone is the Screen WIFI Connection , Connevient to use

You can record the wonderful video or picture
you see anytime, anywhere

01

Connect to Mobile Phone
Download the APP: T-Vision





02

long press " M " key
Choose " WIFI " menu



03

Setting WiFi -Connect
WIFI Name: WLAN-IPTP
Password: abcd1234

Protect Level -IP67

4

IP67 Protect Grade

Protective

High Strength Material, Anti-Drop

Thermal Monocular

High Strength Material

2M Anti-drop Test, No Worry Use

HIGH-STRENGTH MATERIAL



High Strength Material, Dustproof

Thermal Monocular

**POWERFUL DEVICE
NOT AFRAID OF WIND AND SANDSTORM**



High Strength Material, Waterproof

Thermal Monocular

IP67 Waterproof

POWERFUL DEVICE
NOT AFRAID OF WIND AND RAIN



High Strength Material, Environment

Thermal Monocular

55°C

Not Afraid of Hot
Military Quality



-20 °C

Not Afraid of Cold
Full Temperature Working

TECHNOLOGY PARAMETER



Product Model

▼ LH 19

▼ LH 25



Main

Sensor	384×288, 12 μm	384×288, 12 μm
NETD	Less than 35 mk (25 °C, F#=1.0)	
Focal Length	19 mm, F1.0	25 mm, F1.0
Magnification	1.86 – 14.88	2.45 – 19.6
Field of View	13.8°×10.4°	10.5°×7.9°
Detection Range	897 m	1181 m
Frame Rate	50 Hz	50 Hz
Manual Focus	Yes	Yes
Digital Zoom	1×, 2×, 4×, 8×	1×, 2×, 4×, 8×
Monitor	0.4-inch, LCOS, 1280×960	0.4-inch, LCOS, 1280×960
Operating Time	Up to 7.5 h	Up to 7.5 h
Dimension	171×61×57 mm	171×61×57 mm
Weight	300 g	300 g
IP Rating	IP67	IP67
Operating Temp.	-20°C ~ +55°C	-20°C ~ +55°C