

Technical Specifications

Item	RS325-384	RS335-384	RS350-384
Detector type	VOx Uncooled FPA		
Pixel	384×288	384×288	384×288
Pixel pitch	12μm		
NETD	≤40mk		
Focal length	25mm	35mm	50mm
Field of view(±5%)	10.6°×7.9°	7.5°×5.7°	5.3°×4.0°
Frame rate	50Hz		
Focus	Manual		
Screen	Lcos 1280×960,Color lcos 1280×960 resolution		
Out-pupil distance	55mm		
Eyepiece magnification	10X		
Base magnification	X2.3	X3.25	X4.65
Visual degree	Adjustable		
Brightness/contrast	Adjustable		
Polarity reversal	Black hot/white hot		
Electronic zoom	X2, X3, X4		
Picture in Picture	Yes		
Division	Yes		
WIFI	Yes		
Storage	32G		
Storage method	Video, take photos		
Battery type	Built-in lithium battery		
Working hours	>Five hours		
Impact resistance	800G		
Anti-vibration	2g, GB/T2423.10(IEC60068-2-6)		
Protection level	IPX6		
Electromagnetic compatibility	Meet CE requirements		
Humidity	0~95%		
Working temperature	-20°C~+50°C		
Storage temperature	-40°C~+70°C		
Shell color	Black		
Connector	Can be equipped with rifle sight standard fixture (30 standard mounting ring)		
Size	320×75×65mm (Without eye mask)		
Weight	<900g		
Power input	Type-C Connector (Charging, data transmission)		

RS3

Thermal Riflescopes





Thermal
RS3
Riflescopes

12um VOx detector

384 × 288 Pixels



1280 × 960 Large Screen

1280 × 960 large-size display screen makes the display and observation clearer.



WiFi Live Image by APP

WiFi image transmission function, mobile APP real-time browsing, recording, photographing, playback, control and other operations.



Lens & Tube

Lens: 25/35/50mm
Tube 30mm



IPX6

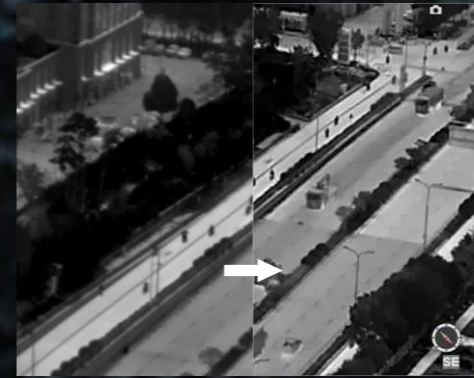
Alloy shell, no fear of harsh environment

> **Observation distance** Meteorological conditions: 25°C, 1atm, visibility 10Km, 60%RH, Human (1.8 × 0.5m) Car (2.3 × 2.3m)

Detection distance	Human 1.8 × 0.5m	1000m (25mm)	1400m (35mm)	1900m (50mm)
	Car 2.3 × 2.3m	1600m (25mm)	2200m (35mm)	3200m (50mm)
Recognition distance	Human 1.8 × 0.5m	500m (25mm)	700m (35mm)	1000m (50mm)
	Car 2.3 × 2.3m	800m (25mm)	1100m (35mm)	1600m (50mm)

Actual range may vary depending on target size and radiation degree, lens specification and environmental conditions. Above approximate distances are for reference only.

Lision II Intelligent Algorithm



Hot-spot Tracking



P-I-P Function



Black hot, White hot, Red hot, Red hot Iron

