

Sytong

XS

THERMAL MONOCULAR



Thermal Imager Monocular
XS Series

Delicate image, further detection, small and lightweight, lossless magnification

**Professionalism is more than superficial
the function is more intimate**

Thermal Imager Monocular
XS Series

Delicate image / further detection/
small and lightweight / lossless magnification



**WiFi App
Connection**



**Laser Red Dot
Position**



**Manual
Focusing**



**Long Battery
Life**



**12µm Pixel
Thermal Imager Sensor**



**1024X768
Display Resolution**

Compact Size, Easy to Carry!

Lightweight, design of 310g/0.68lb only



310g Only

Thermal Monocular Camera

CAN YOU IMAGE ?

In the darkness night

It can help you insight into the heat details hidden in the depths



▲
This is DISCOVERER



— You can observe the thief at a glance in the night



- Outdoor Camping , Can observe wild life animal at your side

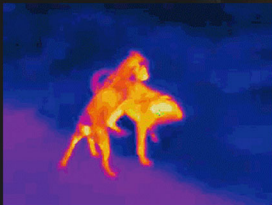


- Observe the road conditions around home at night
Prevent emergencies invisible at night



- Pet is gone

Can be search in first time



- Observe bird behind of the branches leaves on the tree

And observe animals



Avoid hidden surroundings and quickly highlight the target

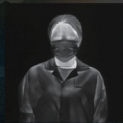
It is a good partner for mountaineering expeditions, outdoor hunting, administrative law enforcement, and maritime search and rescue



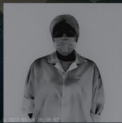
5 Image modes, switch at will



White Hot



Defog



White Hot



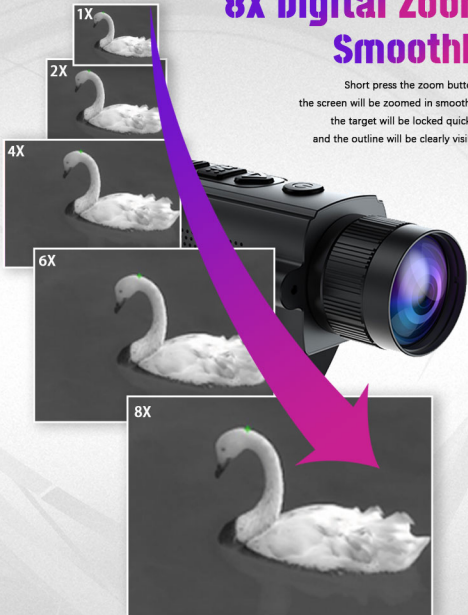
Red Hot



Fusion

8X Digital Zoom Smoothly

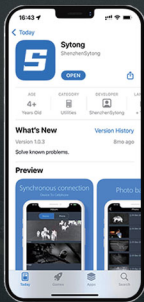
Short press the zoom button,
the screen will be zoomed in smoothly,
the target will be locked quickly,
and the outline will be clearly visible.





WIFI Transmission

Built-in WIFI function, can through the mobile APP real time display and take photo , video



Snapshot



Video



Thermal Monocular

Detection and Recognition Distance Reference

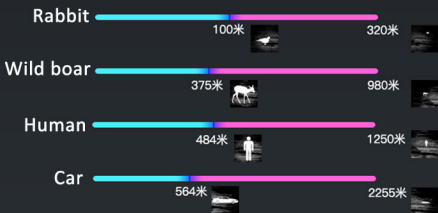


1.7m height for reference ,
955/1250/1750M (Detection distance)



Recognition Distance ■

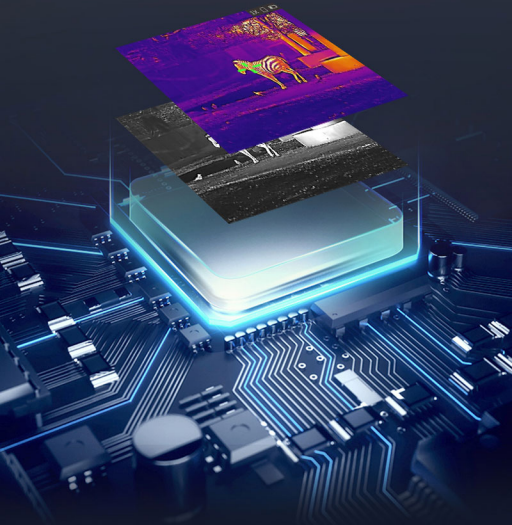
Detection Distance ■



PS : Distance for reference / Different lens with different distance

INGENIOUS INTEGRATION ATTENTION TO DETAIL

12 μ m / 17 μ m Pixels Sensor
Super sensitive resolution Accurate targeting



Sytong

Heat/Code Resistance

The device with heat/code resistance, IP66 waterproof good protective grade , suitable use even in bad environment

-20°C

+50°C



WORKING TIME

>4H

USE HIGH STANDARD CAPACITY LITHIUM BATTERY 18650



3400mAh



XS Series Infrared Thermal Monocular



Item Type	XS03-19	XS03-25	XS03-35	XS06-19	XS06-25	XS06-35
Detector Type	Vox Uncooled FPA					
Pixel	384X288					
Pixel spacing						
NETD	< 30mK (25°C, F#=1.0)					
Focus	F19 / 25 / 35mm, F/1.0					
Eey Releft	30mm					
Frame rate	50HZ					
Focusing	Manual					
Monitor	0.39" ,AMOLED, Resolution 1024X768					
Diopter	-5D ~ +5D adjustable					
Digital Zoom	1X / 2X / 4X / 6X / 8X					
Magnification	1.5X	2.0X	2.8X	0.9X	1.0X	1.7X
Hot spot tracking	Support					
Brightness	Adjustable					
Palette	Black Hot , White Hot , Defog, Red hot , Fusion					
Waterproof	IP66					
Close up range	5m					
Power Supply	3-4.2V					
Battery Type	18650 / 3400 mAh					
External Power	5V (USB)					
Operating time	4 hours					
Operating temp.	-20°C to +50 °C					
Demension	156x54x75mm					
Weight	308g					
Resplution	1024x768 (video . photo display)					
Format	. .mp4 / . jpg (Video / Photo)					
Memory Type	FAT 32 TF Card . max. Support 128G					
Storage method	Video , Image					
WIFI	Support / 2.4GHz / 802.11 b/g / 15m line -of sight reception range					
Detection Distance	955m / 1250m / 1750m (Target size : 1.7 x 0.5m human)					

Note :

*The above data and content are for reference only, subject to change or adjustment without prior notice, the actual product shall prevail.

*All contents of this screen/page should not be interpreted as benchmarking parameters when the product is delivered or implying the use of the product.

Sytong

XS THERMAL MONOCULAR



- | | | |
|--|------------------------|-------------------|
| 1 Protective cover | 2 Objective focusing | 3 Power button |
| 4 Navigation up button | 5 Menu button | 6 Navigation down |
| 7 LED indicator
(Green – power on / Red – charging) | 8 Eyepiece focusing | 9 Red laser point |
| 10 Data compartment | 11 Hand starp | 12 Objective lens |
| 13 Eyepiece lens | 14 Battery compartment | |

Sytong

XS THERMAL MONOCULAR



Sytong

XS THERMAL MONOCULAR



Sytong

XS THERMAL MONOCULAR



Sytong

XS THERMAL MONOCULAR



Sytong

XS THERMAL MONOCULAR



Sytong

XS THERMAL MONOCULAR

